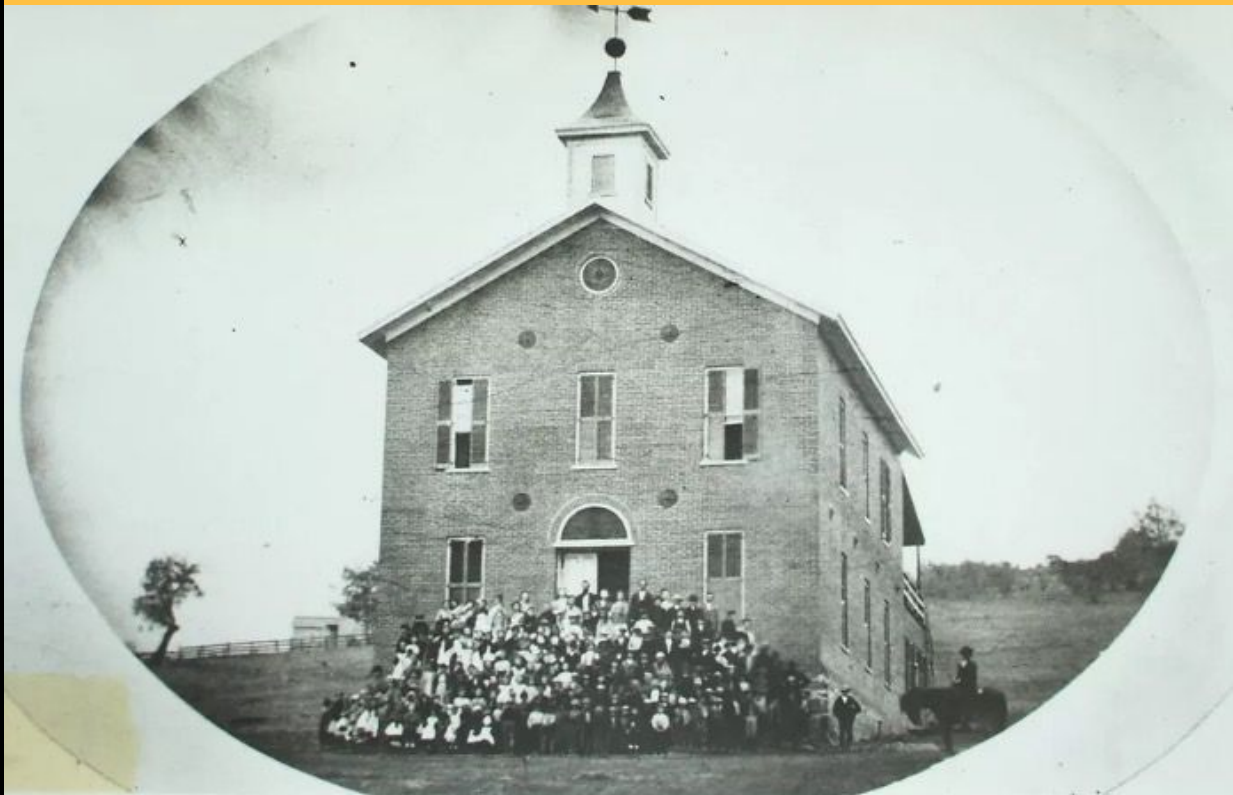


# *Sutter Creek Community Benefit Foundation*

March Newsletter, 2021

## A Pictorial Retrospective The Historic Sutter Creek Grammar School

When considering the significant amount of work that has gone into the restoration and upgrading of our historic grammar school, it seems only fitting that we take a look back through early photographs. We thought we would bring you a look at the evolution over the years. We'll point to changes, large and small, we have noticed about this iconic building. Each picture will note changes and capture approximate dates. We hope you enjoy the journey.



**Early to Mid 1870's (Could be Original Opening) Observations:**

- No evidence of Cole Street behind school
- Unpainted brick
- Some sort of covered porch in back
- Looks like enclosed room(s) underneath porch

- First type of shutters in place
- White front door
- White eaves
- 3 windows on first floor sides - no side doors
- Flagpole yet to be installed
- Man on horseback on right
- Weather vane atop cupola
- Large ball on cupola - now in museum
- Cupola in original configuration - small vents and plain top at base of weather vane (i.e. no embellishment yet, it was to come later)
- "Sunburst" visible above front door



#### 1870's - 1880's Observations:

- Flagpole appears to sit atop a platform over front door although hard to tell from this angle
- Small trees
- Front stairs are still straight sided
- Cole Street appears to be in place
- Building has been painted dark red - remnants of this paint have been uncovered and preserved
- Porch roof yet to be built
- Entrance/exit stairs on left go to door at front - now a window
- White trim around windows
- First appearance of "cabin" in back
- Cupola vents have been enlarged and cupola itself may have been rebuilt
- Note all the kids have hats!



### 1890's - 1895 Observations:

- Full height flagpole with flag after 1890 above cupola - flag had to be raised from ground or 2nd floor window
- Fence on right, Cole Street behind
- Dark (red) color
- Outhouses or storage sheds at rear (lumber looks new)
- Hay stacked in field behind - kids traveled by horse!
- Front play yard retains natural slope
- Trees relatively small
- Ball on cupola changed to small size and weather vane removed
- Cupola has added top under ball



### Mid 1890's Observations:

- Rear addition newly constructed, not yet painted
- Front porch roof added with catwalk on top
- Original building still dark (red)

- Door still in place in 1st window, 2nd floor
- Entry/exit structure on 2nd floor exterior removed
- 3rd window on 1st floor converted to door
- Flagpole in place, lower portion dark (to match building color?)
- Front entry stair side steps in place
- Shutters changed to second type
- Outhouses in back
- Probably no wooden extension in back - evidenced by handrail along drainage ditch
- Small windows in rear addition
- Single chimney with access ladder
- Catwalk from chimney to cupola
- On right - school access road visible, while Cole Street continues above and behind
- Most trees gone - must be winter - no leaves!
- No sign of mine structures on hill behind school
- Terracing and retaining wall evident at lower front
- Chimney by door in new addition yet to be constructed
- Only 3 windows on side of 2nd floor in front section



### Late 1890's - Early 1900's Observations:

- Boys on porch roof! Handrail in place, flagpole rope can be seen (Note: inside 2nd floor front room, a notch in the center window sash can be seen where a short set of steps once provided access to front porch roof)
- Entire building painted white, but not stuccoed (marks in photo are from water on negative)
- Second type shutters in place with swing-out uppers
- Paint looks fresh, eaves are white, front porch posts are white
- Door in place at 3rd window, 1st floor (Note: window tops are flat - doorway tops are arched)
- Mine structure visible at rear - ventilation shaft (Emerson Shaft) for

### Wildman Mine

- No secondary vent on roof yet
- Auxiliary buildings at rear
- Fence surrounding play yard



### World War I - 1920's - Observations:

- Dark mud splash stain at base of building (no rain gutters)
- Short flagpole - was it broken? Still in use? Rope tied to rail
- Front stair sides still in place
- Catwalk and hand rail in place on front porch roof
- Windows in addition still have not been enlarged
- Secondary vent on roof
- Appears to be shingle or shake roof
- Front door repainted



#### 1950's - 1960's Observations:

- Large windows in addition, originals enlarged in '20's - '30's
- 2nd window on 2nd floor not yet converted to door
- Original door at first opening has been converted to window
- No flagpole - mounts in place
- Windows, at least in front, empty and boarded up
- Side steps on front stairs removed
- No shutters
- Rear window on 1st floor converted to door
- "Sunburst" above door covered
- Terrace retaining wall in place
- No fire escape or entry structure to 2nd floor yet
- Looks like tin roof
- Note chimney/installed behind tree partially covering door in addition
- 4th window has been added to side of 2nd floor



**1970's - 1980's (Pre Woman's Club and then SCCBF Restorations)  
Observation:**

- A derelict
- Tin roof rusted
- Paint gone from west (original) half or weathered back to original red
- Flagpole gone
- Upper west windows gone and boarded
- Lower west windows boarded
- Front steps are straight sided - again
- Vent still in place between chimney and cupola
- No catwalk to cupola as seen in picture 4







... and after a couple of extensive, not to mention exhausting restorations, Sutter Creek's own historic grammar school has reached the milestone of 150 years. *Yes, folks, 150 years!* The SCCBF is working on plans for a community celebration (tentatively in September). Everyone will be welcome to tour the school, share experiences, reminiscences, and maybe have a cool sip. We will keep in touch through this newsletter, our Facebook page, and the local newspaper. So comb through your closets and sock drawers for old school photos or artifacts (or if you have some stories to share) and contact us at [tjmurphy31@gmail.com](mailto:tjmurphy31@gmail.com). The SCCBF is looking forward to opening up the school to share all that has been accomplished to date with the generous donations that have been received. Thank you for your ongoing interest and support as we continue to make progress with our work plan.

---

[Visit our Website](#)

[Like us on Facebook](#)

[Contact Us](#)

**DONATE TODAY**

---

Do you know someone who would like to receive our monthly newsletter? Send contact information to [info@sccbf.org](mailto:info@sccbf.org) to be added to our distribution list.

---

*Whether it's a love of our heritage, a special connection to our town's*

*diverse, deeply rooted cultures, or a desire to improve your community, every donor's passion for Sutter Creek is unique. A gift to Sutter Creek Community Benefit Foundation is the perfect way to fund your passion and watch it prosper. By connecting people who care with causes that matter, we help ensure a stronger, healthier tomorrow. We provide a simple, powerful and highly personal approach to giving. (Donations to SCCBF are received through the Amador Community Foundation.)*